



In preparing your audition materials, please know the YSO is passionate about helping young musicians like you reach their musical potential in an orchestral setting and beyond. Do your best to follow tempo markings, but prioritize accuracy over tempo. Deliberate preparation is important for all performances, but keep in mind we are looking for potential, not perfection.

Trumpet in Bb Audition Requirements

All scales are to be played at a minimum of $\text{♩} = 120$

1. Concert G (written A) Major Scale



2. Concert C (written D) Major Scale



3. Concert F (written G) Major Scale



4. Concert B \flat (written C) Major Scale



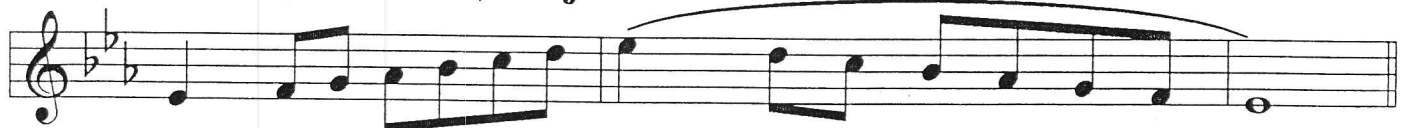
5. Concert E \flat (written F) Major Scale



6. Concert A \flat (written B \flat) Major Scale



7. Concert D \flat (written E \flat) Major Scale



BOLERO

MAURICE RAVEL

Tempo di Bolero moderato assai (♩=72)

20 1 8 9 2 16 3 2

A musical staff in treble clef with a key signature of two sharps (F# and C#) and a 3/4 time signature. The staff contains a series of rests of varying lengths. Above the staff, the numbers 20, 1, 8, 9, 2, 16, 3, and 2 are placed above the rests, indicating the number of measures for each rest. The rests are: 20 measures, 1 measure, 8 measures, 9 measures, 2 measures, 16 measures, 3 measures, and 2 measures.

Begin Here - Play (Mute is Optional)

59 mute p

A musical staff in treble clef with a key signature of two sharps (F# and C#) and a 3/4 time signature. The staff begins at measure 59. The first measure has a 'mute' instruction above it and a piano 'p' dynamic below it. The music consists of a series of eighth and sixteenth notes, some beamed together, with slurs over groups of notes.

64

A musical staff in treble clef with a key signature of two sharps (F# and C#) and a 3/4 time signature. The staff begins at measure 64. The music continues with eighth and sixteenth notes, some beamed together, with slurs over groups of notes.

69

A musical staff in treble clef with a key signature of two sharps (F# and C#) and a 3/4 time signature. The staff begins at measure 69. The music continues with eighth and sixteenth notes, some beamed together, with slurs over groups of notes.

73 4 End Here 17

A musical staff in treble clef with a key signature of two sharps (F# and C#) and a 3/4 time signature. The staff begins at measure 73. The music continues with eighth and sixteenth notes, some beamed together, with slurs over groups of notes. At the end of the staff, there is a box containing the number '4' and the text 'End Here'. Below the staff, there is a long rest of 17 measures.

