



**Wichita Falls Youth
Symphony Orchestra**

2026-2027 YSO Auditions Trumpet Auditions

In preparing your audition materials, please know the YSO is passionate about helping young musicians like you reach their musical potential in an orchestral setting and beyond. Do your best to follow tempo markings, but prioritize accuracy over tempo. Deliberate preparation is important for all performances, but keep in mind we are looking for potential, not perfection.

Trumpet in Bb Audition Requirements

All scales are to be played at a minimum of $\text{♩} = 120$

1. Concert G (written A) Major Scale



2. Concert C (written D) Major Scale



3. Concert F (written G) Major Scale



4. Concert Bb (written C) Major Scale



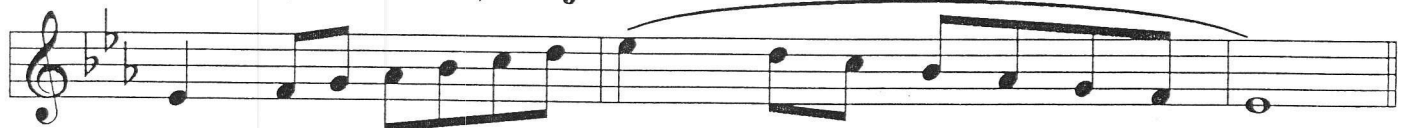
5. Concert Eb (written F) Major Scale



6. Concert Ab (written Bb) Major Scale



7. Concert Db (written Eb) Major Scale



BOLERO

MAURICE RAVEL

Tempo di Bolero moderato assai (♩=72)

20 1 8 9 2 16 3 2

A musical staff in treble clef with a key signature of two sharps (F# and C#) and a 3/4 time signature. The staff contains several measures of rests. Above the staff, measure counts are indicated: 20, 1, 8, 9, 2, 16, 3, 2. The numbers 1, 2, and 3 are enclosed in small boxes.

Begin Here - Play (Mute is Optional)

59 mute p

A musical staff in treble clef with a key signature of two sharps (F# and C#) and a 3/4 time signature. It begins at measure 59. The first note is marked with a piano (*p*) dynamic and a 'mute' instruction. The staff contains a series of eighth and sixteenth notes, some beamed together, with various phrasing slurs.

64

A musical staff in treble clef with a key signature of two sharps (F# and C#) and a 3/4 time signature. It begins at measure 64. The staff contains a series of eighth and sixteenth notes, some beamed together, with various phrasing slurs.

69

A musical staff in treble clef with a key signature of two sharps (F# and C#) and a 3/4 time signature. It begins at measure 69. The staff contains a series of eighth and sixteenth notes, some beamed together, with various phrasing slurs.

73 4 End Here 17

A musical staff in treble clef with a key signature of two sharps (F# and C#) and a 3/4 time signature. It begins at measure 73. The staff contains a series of eighth and sixteenth notes, some beamed together, with various phrasing slurs. A box labeled '4' is positioned above the staff. A box labeled 'End Here' is positioned above the staff. A box labeled '17' is positioned above the staff.

