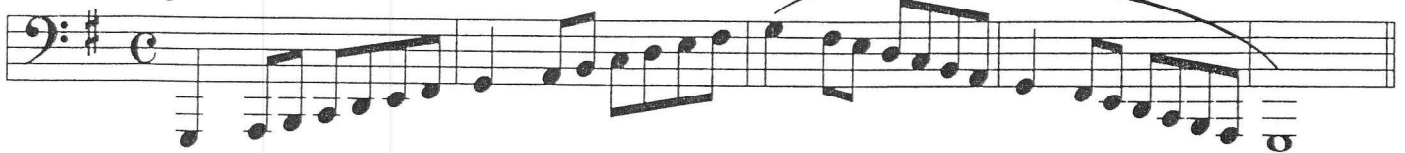




In preparing your audition materials, please know the YSO is passionate about helping young musicians like you reach their musical potential in an orchestral setting and beyond. Do your best to follow tempo markings, but prioritize accuracy over tempo. Deliberate preparation is important for all performances, but keep in mind we are looking for potential, not perfection.

Tuba

1. G Major Scale



2. C Major Scale



3. F Major Scale



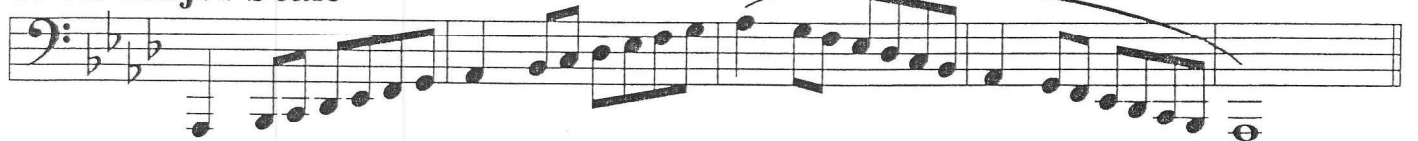
4. B \flat Major Scale



5. E \flat Major Scale



6. A \flat Major Scale



Choose 3 of the following 4 Excerpts to prepare

Excerpt No. 1

1 Wagner: Die Meistersinger von Nurnberg

Moderato, sempre largamente e pesante.

4/4

mf marc. assai.

cresc. poco a poco

molto legato

sempre f

Excerpt No. 2

Tchaikovsky "Symphony No. 4" Mvmt. 4

253

1

sempre fff

260

265

270

277

283

288

Excerpt #3
Pyotr Ilyich Tchaikovsky
Cossack Dance from Mazeppa

217 **X**

ff

224 **Y** $\frac{2}{3}$

1 2 $\frac{2}{3}$ 1 2

D# = Eb G# = Ab

230 **Z** Presto $\frac{2}{3}$ 2

ff

Detailed description: This block contains three staves of musical notation in bass clef with a key signature of one sharp (F#). The first staff (measures 217-223) is marked with a red bracket on the left and a box labeled 'X'. It begins with a forte (ff) dynamic. The second staff (measures 224-229) is marked with a box labeled 'Y' and a 2/3 time signature. It includes fingering numbers (1, 2) and fingering diagrams (2/3) above the notes. Below the staff, the notes D# and G# are equated to Eb and Ab respectively. The third staff (measures 230-236) is marked with a box labeled 'Z' and the tempo marking 'Presto'. It includes a fingering diagram (2/3) above the notes and a forte (ff) dynamic. A red bracket is placed on the left side of the third staff.

Excerpt #4

III. Satz

1 8 2 (1. Fag.)

Feierlich und gemessen, ohne zu schleppen

pp

pp

1 2 3 4 4 5 6 7 8 9 10

Detailed description: This block contains three staves of musical notation in bass clef with a key signature of two flats (Bb, Eb) and a 6/6 time signature. The first staff (measures 1-8) is marked with a red bracket on the left and contains the tempo marking 'Feierlich und gemessen, ohne zu schleppen' and a piano (pp) dynamic. It includes fingering numbers (1, 8) and a fingering diagram (2) above the notes. The second staff (measures 9-10) is marked with a red bracket on the left and contains a piano (pp) dynamic and a fingering diagram (3) above the notes. The third staff (measures 1-10) is marked with a red bracket on the left and contains fingering numbers (1, 2, 3, 4, 4, 5, 6, 7, 8, 9, 10) above the notes.

EUPHONIUM (Tenor Tuba)

Mussorgsky (arr. Ravel): Pictures at an Exhibition – Bydlo,
Beginning-Figure 39

Sempre moderato pesante
Solo

pp poco a poco cresc.

38

39

Strauss: Ein Heldenlebe –

62 3 Horn *f*

69

74 *mf cresc.* 7 *ff* 3

85 3 *mf cresc.* *fp*

92 *cresc.* *ff* 3 2